

MPT-3000RP

Railway Computer System

EN50155/EN45545 Certified Intel® Atom™ Processor E3845 Outdoor IP67
Waterproof Railway Computer System with M12 Connection and WWAN Redundancy

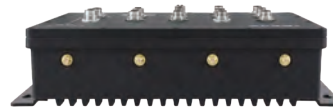


Specifications

System Mainboard	MBT-3001R
CPU Type	Intel® Atom™ Processor E3845
System Speed	1.91GHz
Memory	2x 2GB DDR3L-1333 SO-DIMM (Dual Channel)
Construction	Aluminum
Chassis Color	Black
Front panel I/O	CFast, 2.5" device bay, 2x SIM sockets, 2x M12 USB 2.0, Status LEDs, 4x antenna connectors, 1x M12 VGA, 3x M12 COMs, 2x M12 GbE, 1x M12 power connection, 1x M12 GPIO, 1x M12 CAN Bus
Storage	2.5" device bay for SSD & HDD, M.2 SSD Storage
Expansion slots	1x Half-size Mini PCI-E socket (USB 2.0), 1x Full-size Mini PCI-E socket (USB 2.0 + PCI-E), 1x 2230 Socket 1 M.2 socket (USB 2.0 + PCI-E), 1x 3042 Socket 2 WWAN M.2 socket (USB 2.0), 1x 2280 Socket 3 SSD M.2 socket (SATA)
Power Supply	DC 9V~36V / 72V / 110V
Mounting	Wall Mount
Dimensions	270.0 (W) x 63.0 (D) x 210.0 (H) mm 10.62" (W) x 2.48" (D) x 8.26" (H)
Operating Temperature	SSD: -40°C ~ 70°C (-40°F~158°F)
Storage Temperature	-40°C ~ 85°C (-40°F~185°F)
Relative Humidity	10 ~ 95% RH @ 45°C (non-condensing)
Vibration	Function: 1 m/s ² , 5Hz ~ 150 Hz (EN 61373) Lifetime: 5.72 m/s ² , 5Hz ~ 150 Hz (EN 61373)
Shock	50 m/s ² , 30 msec (EN 61373)
Certification	EN50155: 2007, EN50153:2014 EN50121-3-2:2015, CE class A, FCC class A, EN45545

Features

- EN50155 certification and IP67 rating
- Fanless and ruggedized design
- Robust M12 connectors for dual GbE, USB and power input
- Dual SIM sockets supports WWAN redundancy
- Rich I/O interfaces for wireless, SSD, GPS, WWAN
- Ignition power control
- Wide-range voltage GPIO interface



Ordering Information

MPT-3000RPSM	MPT-3000RPSM with MBT-3001R (Intel® E3845) w/ 2x 2GB DDR3L-1333, SSD bay, No PSU, No storage (RoHS)
--------------	---

Dimensions

